

Product Specifications

DISCOVERY and EXPLORER Series

Scanning Method

Linear X-ray fan-beam, utilizing motorized table and C-arm

X-ray System

Switched-pulse dual-energy (100 kVp/140 kVp)

Detector System

Multi-element detector array

External Shielding

None required*

BMD Precision

<1.0%

Calibration

- Automatic, continuous calibration using Hologic's patented Automatic Internal Reference System
- Automatic quality control program
- Operator calibration *not* required

Operating Requirements

Temperature: 60° - 90°F (15°-32°C)

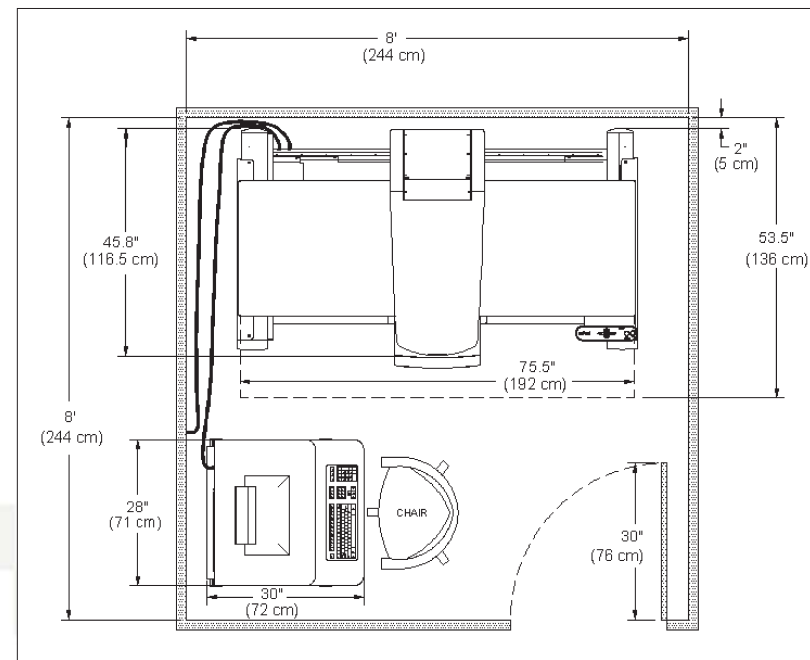
Power: 100VAC (16A)/120VAC (14A)/230VAC (8A)

Humidity: 20% - 80% relative humidity, noncondensing

Average heat load: 3,400 BTU/hr

Table Height

71cm (28")



The QDR Series packs a lot of performance into a small footprint. Operating from existing power sources, the Discovery C (shown above), Discovery SL and Explorer fit comfortably in an 8' x 8' exam room (8' x 10' for the Discovery A, Discovery W and Explorer with Whole Body) and require no protective shielding or special room preparations.*

* INSTALLATION REQUIREMENTS FOR X-RAY EQUIPMENT VARY. CHECK WITH LOCAL REGULATORY AUTHORITIES.

Additional Product Specifications

DISCOVERY

Patient Weight Limit

- 204 kg (450 lbs.)

Standard Hardware Configuration

- Computer worktable with Intel® Pentium® PC
- 40GB (min) hard drive
- 512MB (min) RAM
- 64MB (min) video board
- 17" monitor
- HP Color InkJet® printer
- CD R/W drive
- Network ready

Optional Hardware

- Magnetic Optical Disk Storage
- HP LaserJet® printer
- Modem
- 17" flat panel monitor
- Oasis QDR for Windows® XP Stand-alone Workstation

Standard Software Configuration (all models)

- QDR for Windows® XP Operating System
- Tech Tips™
- Express Exam™
- NHANES Reference Data
- QDR OnePage™ Report
- Context Sensitive Help
- Fracture Risk Indication
- OneTime™ Auto Analysis
- Auto Low BMD for spine and hip
- Scan/Analyze Protocols for AP lumbar spine, proximal femur, Dual Hip™, forearm and scoliotic spine, pediatric spine and hip
- Pediatric Whole Body
- Pediatric Reference Data
- DXA Practice Manager™

Additional Software (standard on C,W, SL & A models)

- ImagePro™
- CAD/x™
- Express BMD™
- High Definition Instant Vertebral Assessment™ (IVA-HD)

Optional Software

- Instant Vertebral Assessment™ (IVA) (i-series only)
- CAD/x™
- IRIS™ Connectivity Suite**
- General Region of Interest
- DAP
- Body Composition with Sub Regional Analysis (A & W models only)
- QDR Mobility

EXPLORER

Patient Weight Limit

- 137 kg (300 lbs.)

Standard Hardware Configuration

- Computer worktable with Intel® Celeron PC
- 40GB (min) hard drive
- 256MB (min) RAM
- 64MB (min) video board
- 17" monitor
- HP Color InkJet® printer
- CD R/W drive
- Network ready

Optional Hardware

- Magnetic Optical Disk Storage
- HP LaserJet® printer
- Modem
- 17" flat panel monitor
- Oasis QDR for Windows® XP Stand-alone Workstation

Standard Software Configuration

- QDR for Windows® XP Operating System
- Tech Tips™
- Express Exam™
- NHANES Reference Data
- QDR OnePage™ Report
- Context Sensitive Help
- Fracture Risk Indication
- OneTime™ Auto Analysis
- Auto Low BMD for spine and hip
- Scan/Analyze Protocols for AP lumbar spine, proximal femur, Dual Hip™, and scoliotic spine, pediatric spine and hip
- Pediatric Whole Body
- Pediatric Reference Data
- DXA Practice Manager™

Optional Software

- IRIS™ Connectivity Suite**
- General Region of Interest
- Forearm
- Prosthetic Hip
- Whole Body
- Body Composition with Sub Regional Analysis
- DAP
- QDR Mobility

Typical Performance (60Hz)*

Exam	Explorer	Discovery Ci	Discovery Wi	Discovery C	Discovery W	Discovery SL	Discovery A
Exam	Scan Time Exposure	Scan Time Exposure	Scan Time Exposure	Scan Time Exposure	Scan Time Exposure	Scan Time Exposure	Scan Time Exposure
Lumbar Spine	90s 0.07mGy	30s 0.07mGy	30s 0.07mGy	10s 0.04mGy	10s 0.04mGy	10s 0.04mGy	10s 0.04mGy
Proximal Femur	90s 0.07mGy	30s 0.07mGy	30s 0.07mGy	10s 0.04mGy	10s 0.04mGy	10s 0.04mGy	10s 0.04mGy
Supine Lateral BMD						120s 0.3mGy	120s 0.3mGy
Forearm	30s 0.05mGy	30s 0.08mGy	30s 0.08mGy	30s 0.04mGy	30s 0.04mGy	30s 0.04mGy	30s 0.04mGy
Whole Body	403s 0.012mGy		403s 0.012mGy		403s 0.012mGy		165s 0.008mGy
Instant Vertebral Assessment (IVA)		10s 0.02mGy	10s 0.02mGy	10s 0.03mGy	10s 0.03mGy	10s 0.03mGy	10s 0.03mGy
High Definition Instant Vertebral Assessment (IVA-HD)				15s 0.025mGy	15s 0.025mGy	15s 0.025mGy	15s 0.025mGy

* 50Hz and other scan modes available

Specifications According to Model

	Explorer	Discovery Ci	Discovery Wi	Discovery C	Discovery W	Discovery SL	Discovery A
Scan Region	77" x 26" (195cm x 65cm)	38" x 20" (96cm x 51cm)	77" x 26" (195cm x 65cm)	38" x 20" (96cm x 51cm)	77" x 26" (195cm x 65cm)	38" x 26" (96cm x 65cm)	77" x 26" (195cm x 65cm)
Footprint	79.5" x 49.5" (202cm x 126cm)	75.5" x 45.8" (192cm x 116cm)	79.5" x 49.5" (202cm x 126cm)	75.5" x 45.8" (192cm x 116cm)	79.5" x 49.5" (202cm x 126cm)	79.5" x 43.5" (202cm x 110.5cm)	79.5" x 43.5" (202cm x 110.5cm)
	119" x 59" (302cm x 150cm)		119" x 59" (302cm x 150cm)		119" x 59" (302cm x 150cm)	79.5" x 59" (202cm x 150cm)	119" x 59" (302cm x 150cm)
	(table extended with Whole Body option)		(table extended)		(table extended)	(C-arm rotated, table extended)	(C-arm rotated, table extended)
System Weight	Table/C-arm 680lb (310kg)	Table/C-arm 650lb (295kg)	Table/C-arm 680lb (310kg)	Table/C-arm 650lb (295kg)	Table/C-arm 680lb (310kg)	Table/C-arm 800lb (365kg)	Table/C-arm 800lb (365kg)
	Control console 150lb (68kg)	Control console 150lb (68kg)	Control console 150lb (68kg)	Control console 150lb (68kg)	Control console 150lb (68kg)	Control console 150lb (68kg)	Control console 150lb (68kg)

**Some components of the IRIS package can be purchased separately.

Features and specifications subject to change without notice

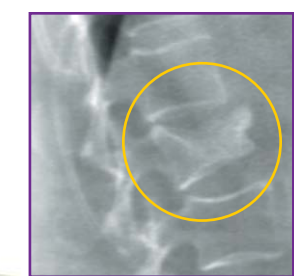
Scan Site Specifications According to Model

STANDARD					Supine Lateral BMD	Supine Lateral BMD
				High Definition Instant Vertebral Assessment	High Definition Instant Vertebral Assessment	High Definition Instant Vertebral Assessment
			Whole Body		Whole Body	Whole Body
		Forearm	Forearm	Forearm	Forearm	Forearm
	Dual Hip	Dual Hip	Dual Hip	Dual Hip	Dual Hip	Dual Hip
	Proximal Femur	Proximal Femur	Proximal Femur	Proximal Femur	Proximal Femur	Proximal Femur
	Lumbar Spine	Lumbar Spine	Lumbar Spine	Lumbar Spine	Lumbar Spine	Lumbar Spine
Explorer	Discovery Ci	Discovery Wi	Discovery C	Discovery W	Discovery SL	Discovery A
OPTIONAL	Prosthetic Hip	Prosthetic Hip	Prosthetic Hip	Prosthetic Hip	Prosthetic Hip	Prosthetic Hip
	Decubitus Lateral BMD	Decubitus Lateral BMD	Decubitus Lateral BMD	Decubitus Lateral BMD		
	Body Composition with Subregion BCA		Body Composition with Subregion BCA		Body Composition with Subregion BCA	Body Composition with Subregion BCA
	Whole Body	Instant Vertebral Assessment	Instant Vertebral Assessment			Small Animal
	Forearm					Infant Whole Body



The power of Hologic is the power of clear innovation and a singular focus . . . to challenge the boundaries of science and technology every day to raise the standards of image quality. Our passion has led to discoveries that contribute to earlier detection, more accurate diagnoses, and better overall patient care. As we focus on the future, we are bound by our clarity of vision. A vision created solely to enhance yours.

Lorad® Breast Cancer Detection ■ Osteoporosis Assessment
MRI Extremity Imaging ■ Fluoriscan™ C-arm Imaging

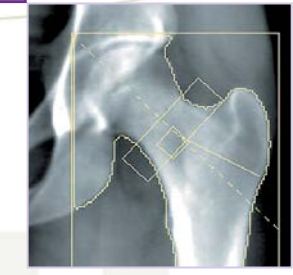


Discovery and Explorer
QDR Series

Advanced Health Assessment

The Hologic QDR® Series bone densitometers combine the proven clinical value of bone mineral density (BMD) measurement and vertebral fracture assessment. Both Discovery and Explorer are powered by our exclusive OnePass™ technology enabling superior image quality and unparalleled precision.

Whether you're conducting major research or just beginning to incorporate bone densitometry into your clinical practice, Hologic has a QDR system to suit your needs.



Corporate Headquarters
 35 Crosby Drive,
 Bedford, MA 01730-1401 USA
 Tel: +781.999.7300
 Sales: +781.999.7453
 Fax: +781.280.0668
 www.hologic.com

Europe
 Horizon Park
 Leuvensesteenweg
 510, BUS 31
 1930 Zaventem, Belgium
 Tel: +32.2.711.4680
 Fax: +32.2.725.2087

Asia Pacific
 3/F, 21 Li Yuen Street West
 Central, Hong Kong
 Tel: +852.3102.9200
 Fax: +781.280.0668

S-161 US (12/05) © Hologic 2005. All rights reserved. Printed in USA. Specifications are subject to change without prior notice. Hologic and Hologic logos, QDR, Discovery, Express BMD, Instant Vertebral Assessment, IVA, High Definition Instant Vertebral Assessment, IVA-HD, OnePass, Express BMD, Express Exam, Image Pro, CADfx, QDR Mobility, IRIS, Tech Tips, DXA Practice Manager, OneTime Auto Analysis, Dual Hip, A Hologic Company, are trademarks or registered trademarks of Hologic, Inc., in the United States and other countries. Windows is a registered trademark of Microsoft Corporation.

