

## The Easy Choice

### Film Digitizing Solutions for Any Practice

The conversion from film to digital mammography presents many challenges. We are collaborating with radiologists and technologists to better understand the demands of the reading environment, and to perfect the art of film scanning.

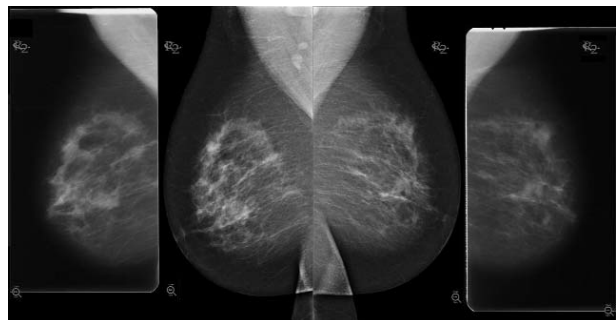
Comparison with prior mammograms significantly improves overall performance and can reduce referrals due to non-lesion locations<sup>1</sup>. The need to compare prior and current mammograms remains unchanged as reading environments migrate to softcopy displays. DigitalNow provides DICOM export of digitized mammograms for use in a softcopy viewing environment.

We have selected the finest film scanners to provide images with the best contrast, lowest noise and largest dynamic ranges. Our scientists and engineers have also enhanced DigitalNow™ to meet the most specific needs of our customers.

### What are DigitalNow Advantages?

DigitalNow allows you to digitize analog images for future comparison. The advantages of DigitalNow are:

- Improves the digital mammography reading environment<sup>2</sup> and radiologist workflow
- Film perimeter blackening for ease of viewing
- GreenLight™ user interface automates film scanning and optimizes technologist workflow
- Seamless integration with modality worklist
- Enhanced quality control:
  - Patient ID, orientation and identification errors are corrected without rescanning
  - Optional verification step available to ensure quality control check
- Ability to archive in 50µm at 100µm<sup>3</sup> resolution
- Ability to scan 24 films per study including special views without manually counting the films
- Archive mammography images for future use
- Enables off-site film storage
- Complete Latin-1 character support—accepts and displays European characters (e.g., á, ü)
- Dynamically select from four image appearances on any IHE Mammography Workstation ('Normal Breasts', 'Dense Breasts', 'Underexposed Images', and 'Overexposed Images')
- Choice of film scanning platforms, including new high speed laser scanner



*DigitalNow prior images (left and right) ready for comparison with a current digital mammogram (center)*

### Getting started with DigitalNow

Existing Hologic R2 ImageChecker® CAD (Computer Aided Detection) users may be able to add DigitalNow to their systems. DigitalNow software can also be purchased as part of a new system with or without ImageChecker CAD software. We offer a range of systems for every clinical scenario.

## DigitalNow 8.7 Product Specifications

### Patient Demographics

DICOM Query Choices: Patient ID  
Accession Number  
Medical Record Number

Patient Data Entry: At Console: Included  
Remote: Included

### Image Outputs

Image Output Resolution: 50µm and/or 100 µm

Output Image Size per Film: 50µm:  
18 x 24 cm = 34.6 MB 24 x 30 cm = 57.6 MB

100µm:  
18 x 24 cm = 8.6 MB 24 x 30 cm = 14.4 MB

DICOM Output: DICOM Digital Mammography Image—For Presentation

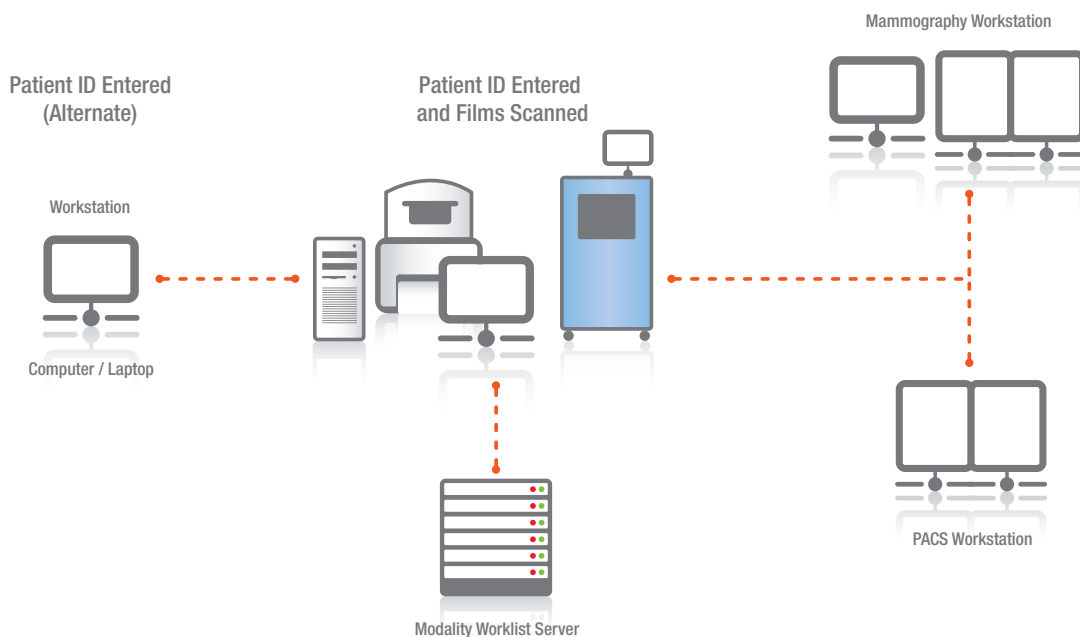
### Data Quality

Image Quality Choices: Normal breast  
Dense breast  
Overexposed  
Underexposed

Correct Without Rescanning: Image Orientation  
DICOM Identification  
Study Description  
Patient Demographics

Hologic Connect™: Hologic Connect enables the quick troubleshooting, upgrading and repair of your system with minimal down-time.

Quality Control: At Console: Included  
Remote: Included



DS-00049 (10/08) US/International © 2008 Hologic Inc.  
All rights reserved. Hologic, DigitalNow, GreenLight, ImageChecker, and associated logos are trademarks and/or registered trademarks of Hologic Inc. and/or its subsidiaries in the United States and/or other countries.

**HOLOGIC™**

#### United States / Latin America

35 Crosby Drive,  
Bedford, MA 01730-1401 USA  
Tel: +1.781.999.7300  
Sales: +1.781.999.7453  
Fax: +1.781.280.0668  
sales@hologic.com  
www.hologic.com

#### Europe

Everest (Cross Point)  
Leuvensesteenweg 250A  
1800 Vilvoorde, Belgium  
Tel: +32.2.711.4680  
Fax: +32.2.725.2087

#### Asia Pacific

Suite 1705, Tins Enterprises Centre  
777 Lai Chi Kok Road, Cheung Sha Wan  
Kowloon, Hong Kong  
Tel: +852.3526.0718  
Fax: +1.781.280.0668